



City of Hartwell Parking Lot and Pocket Park

Team Members: Julia Hauser, Will Milling, Kerry Smethers
Faculty Advisor: Dr. Stephan Durham

Julia Hauser
Environmental Engineering
Newnan, GA

Will Milling
Civil Engineering
Atlanta, GA

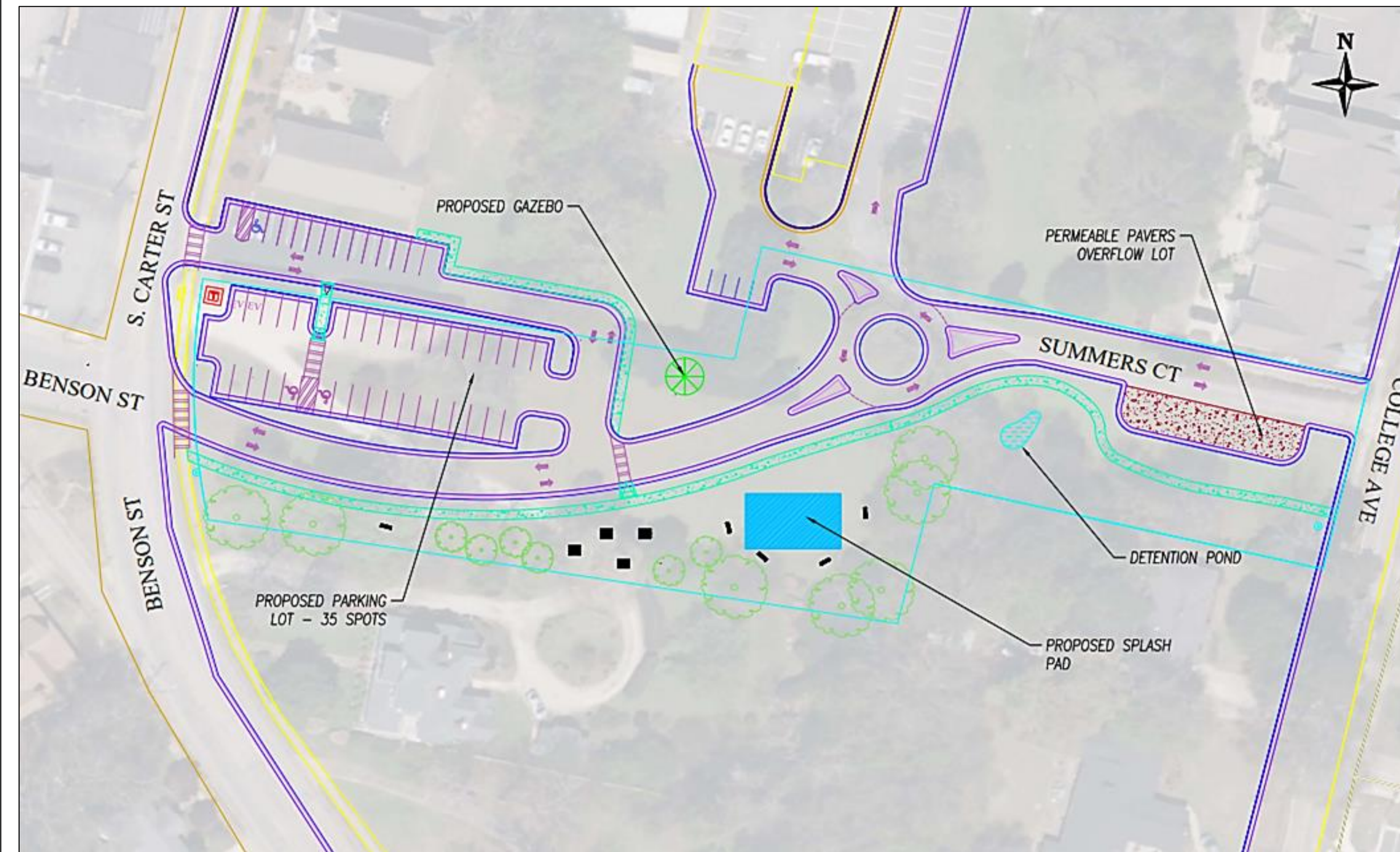
Kerry Smethers
Civil Engineering
Lawrenceville, GA

Project Background

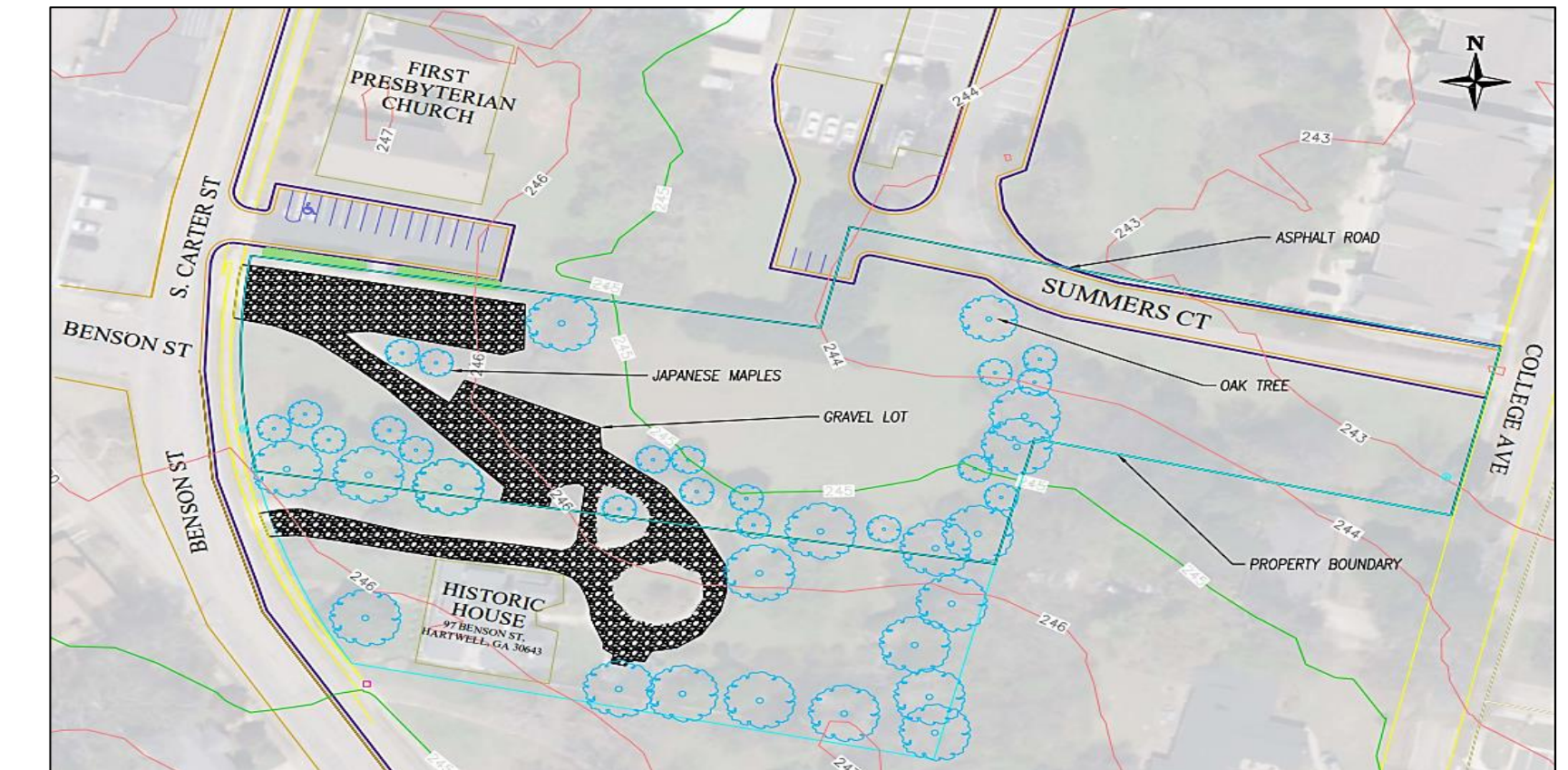
The site of this project is located in Hartwell, GA, adjacent to City Hall, which is in need of more parking spaces, a route through the lot to replace the one lane road, and a new park space. The main goal of the project is to increase mobility in the city and provide a new space for citizens and tourists. The city obtained an abutting parcel of green space that will be used for the site to create a new lot and park space. It is also important to note that currently, the City of Hartwell has limited parks which include but are not limited to the Botanical Gardens and a railroad park/wellness track. The city, or city officials, the clients of this project, specifically noted that Hartwell is in need of playground style parks. A park next to the City Hall would be great for families and events and would also provide a space for kids to go after school, as the site is right near an elementary school. The design of the parking lot, pocket park, and the new passage road will benefit not only the city hall employees and city residents, but it will also attract tourists, helping local businesses to grow. This project will assist in economic growth, and continue the spike from the previous 2 years, where nearly \$3 million of public and private investment has taken place in the downtown Hartwell area. As Hartwell continues to grow, this site will provide the means to help the city stand out and provide sustainable green areas to its multitude of citizens.

The key elements of our site include a 35-space parking lot, a thoroughfare connecting the site's adjacent roads, and the park area, which features a splash pad. The parking lot includes two EV charging spaces per the clients' request, two handicap-accessible parking spots per ADA requirements, and a connection to the existing church parking lot. The proposed road meets Summers Ct. at a roundabout - a choice that was made to promote easy traffic flow. On the other side of the proposed road is the park area. Our primary goal was to include a splash pad, but we were also able to address some of our clients' smaller wants by including a 20' covered gazebo, a picnic table area, a 5' sidewalk to make the city more walkable, and overflow parking for the nearby elementary school.

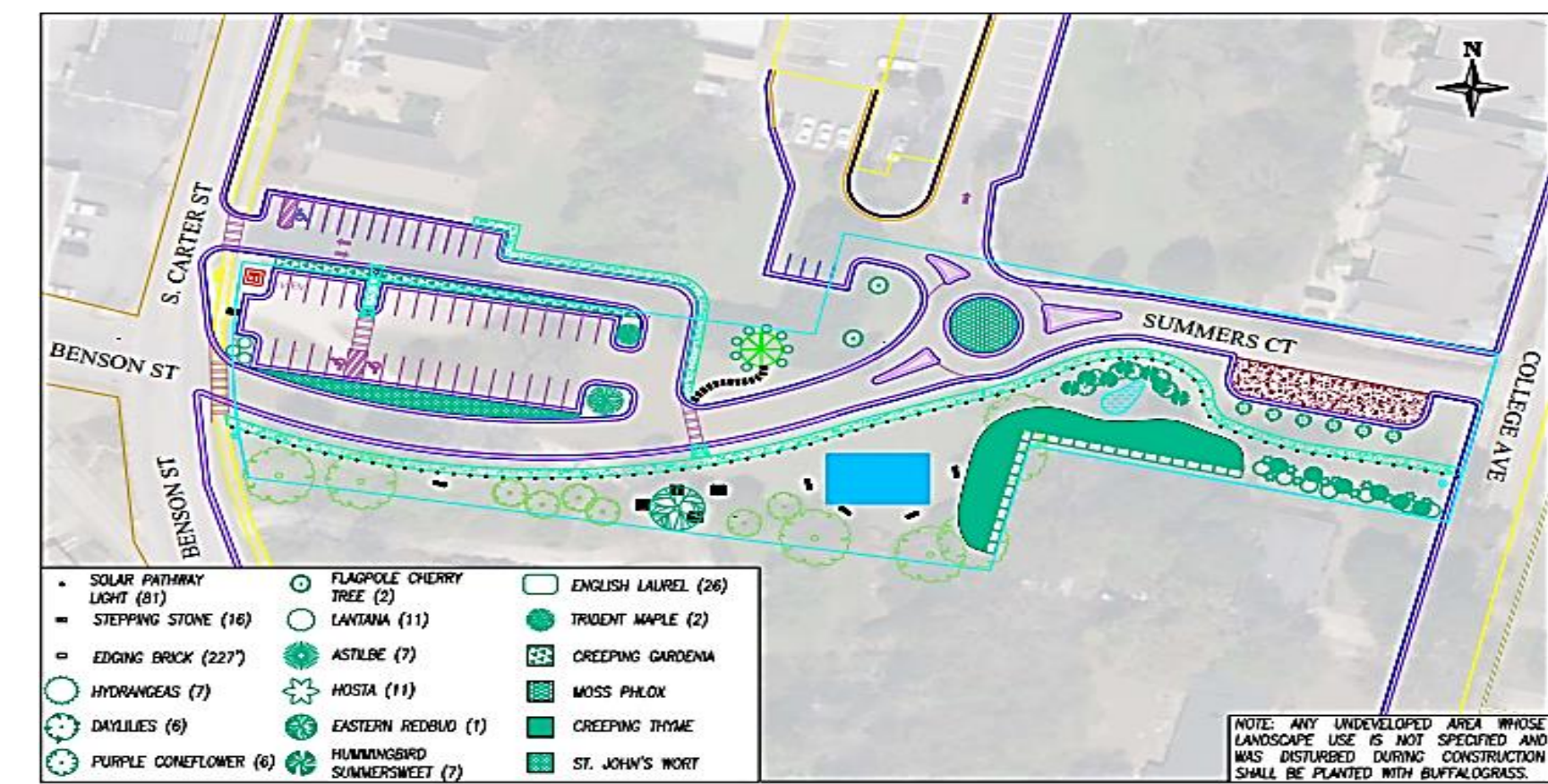
Site Plan



Existing Conditions



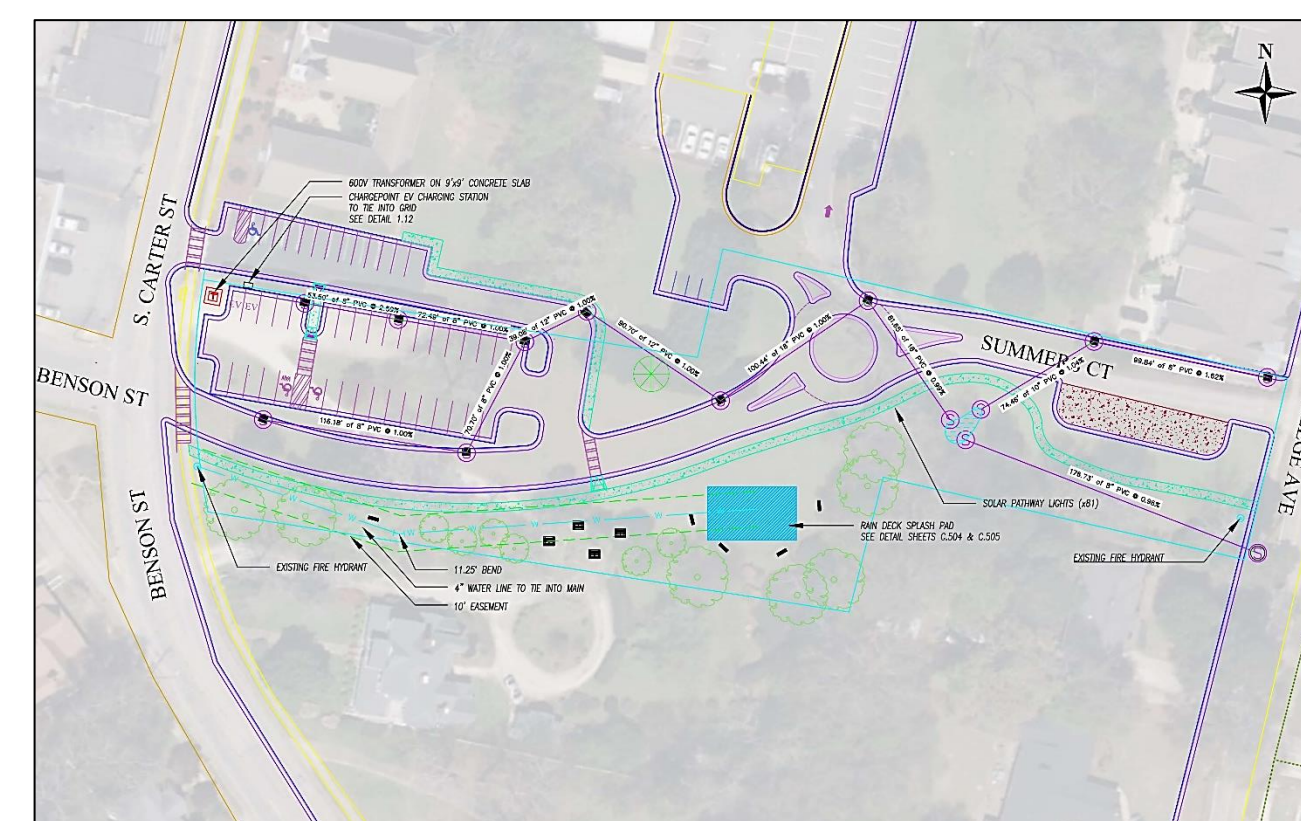
Landscape Plan



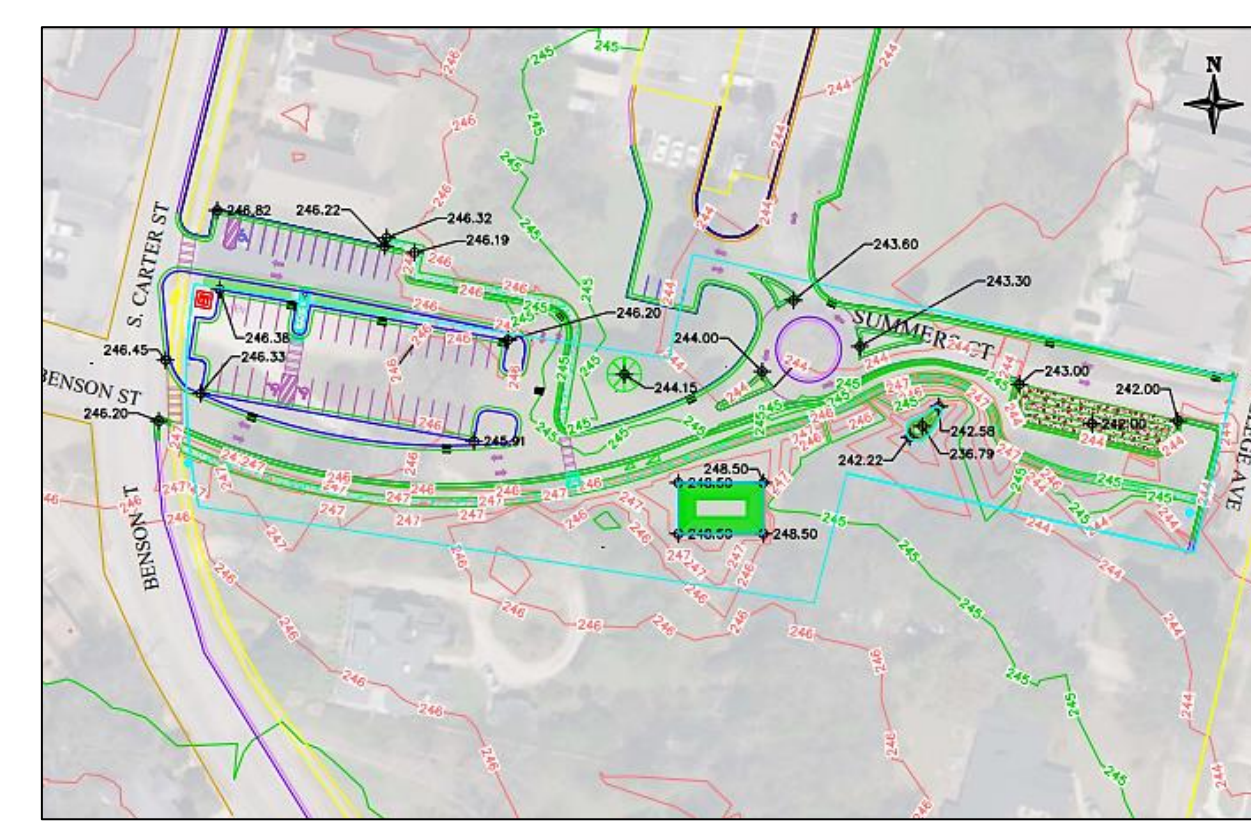
Opinion of Probable Cost



Utility Plan



Grading Plan



Park Features



College of Engineering
UNIVERSITY OF GEORGIA

Sponsor/Client: ARCHWAY Partnership